

3/4/2010

Lower back pain and radicular pain.

Pertinent MRI findings:



Figure One: Lumbar scoliosis with significant rotation of the vertebrae.

Figure Two: Distortion of the neural elements due to encroachment of the right facet joint and associated ligaments and vertebral torsion.

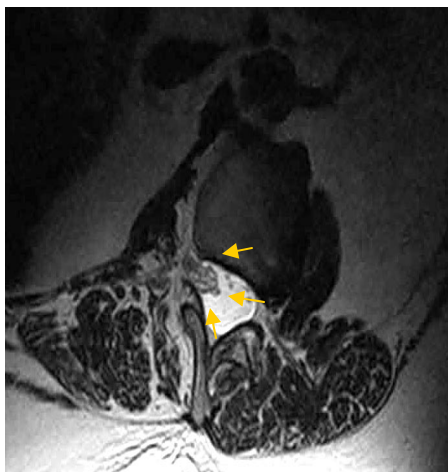
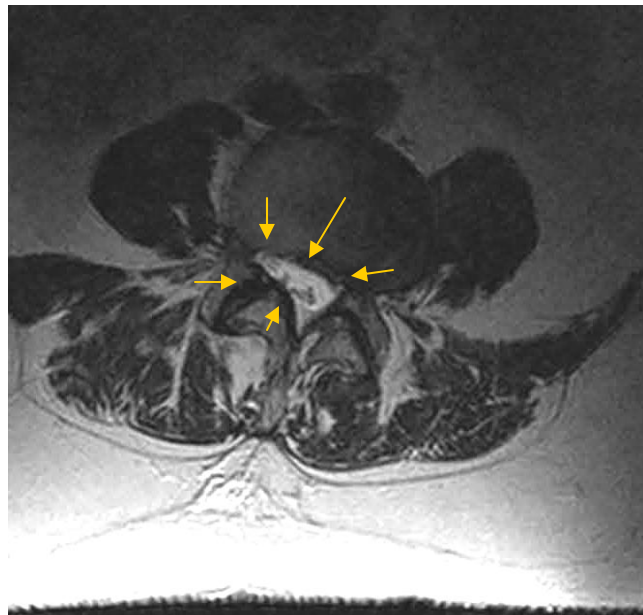


Figure Three: Eccentric displacement of the neural elements secondary to torsion and tension associated with lumbar scoliosis.

George W Kukurin DC DACAN